

Portable Fiber Laser Engraving Machine

With the intelligent red light positioning system,
double insurance, various configurations,
Hard-core positioning allows you to perform stably



Grip buttons, control marking with one hand

With its unique advantages, the portable laser engraving machine system truly allows you to mark on demand.

Long-term, stress-free operation

High-quality precision parts, rejects low quality
 Ready-to-use, zero maintenance cost
 Independently developed software system,
 stable work without errors

Born for efficiency

Marking speed can reach 7000mm/s
 Employ standard and custom communication protocols
 Independently developed smart chips with powerful
 performance can quickly process huge data and
 complex patterns.

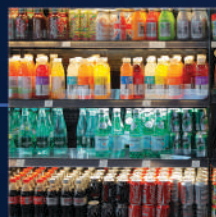
Simple and easy to use

Intelligent touch screen operation interface
 System content is easy to understand
 Support various languages, one-click marking

Easy to integrate

Thin and light body with high-density materials
 Quartz high-transmission coated field lens
 expands field of view
 The focal length can be adjusted at will to adapt to
 a variety of working distances, making production
 line integration more flexible.

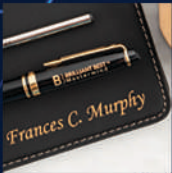
Industrial Experiences:



A variety of content can be identified

English, Arabic, date, logo, pictures, QR code, barcode

Any marking content can be easily handled



Font



Logo



Date



Barcode



QR code



Pictures

Easily handle various materials

Suitable for a variety of production materials

Metal: steel, iron, aluminum, zinc, copper, etc.

Curved objects, hard plastics, Melamine board



Automotive



aluminum



steel



Hard plastic



Cooper



Metal

Product Parameter Table	CSC 20W FL50/100	CSC 30W FL50/100	CSC 50W FL50/100
Machine material	Engineering plastics		
Laser type	Fiber laser generator		
Output Power	≥20 W	≥30 W	≥50 W
Laser wave length	1064 nm		
Printing method	High-precision two-dimensional scanning method		
Marking speed	≤7000mm/s		
Master control	Highly integrated motherboard with built-in 7-inch screen		
Maximum pulse energy	0.75mJ		
Frequency adjustable range	30-60 kHz		
Operating system	Linux		
Cooling System	Air cooling		
Marking line type	Dot matrix and vector integrated machine (can do both dot matrix and vector printing)		
Reflector size	Standard configuration: 8.5mm		
Marking range	50mm×50mm \ 100mm×100mm		
Targeting	Red light positioning		
Number of lines of characters to be engraved	Any row within the marking range		
printing speed	650 characters/second (the specific speed is related to the product material and printing content)		
Font	English, Arabic numerals and other standard fonts		
File format	BMP/DXF/HPGL/JPEG/PLT		
Barcode/ QR code	CODE39, CODE128, CODE126, EAN13, PDF417, 01CODE, QR, AZTECCODE, DM, GS1DM, DOTCODE, HANXINCODE		
battery capacity	12 amp hours		
Use time measured at an ambient temperature of 22°C	≤7hours		
Full charging time	4huors		
Net weight of machine (host + control box)	8.4 kg	9.1 kg	
Handheld size	241.5x79x151 mm	25 x79x151 mm	
Control box size	310x260x307 mm	310x269x307 mm	
pollution level	2		
Overvoltage category	II		
Adapt to temperature	0-40 degree calceus		

Your files “don’t have to wait”!

Intelligent touch screen humanized system

Print faster without adding any hassle to your work

Stable and compatible with PLT/JPG/DXF/BMP multi-format files



U disk import

Touch screen editing

One-click coding

HD printing

Accurate and stable

Equipment appearance diagram

Appearance of handheld part

